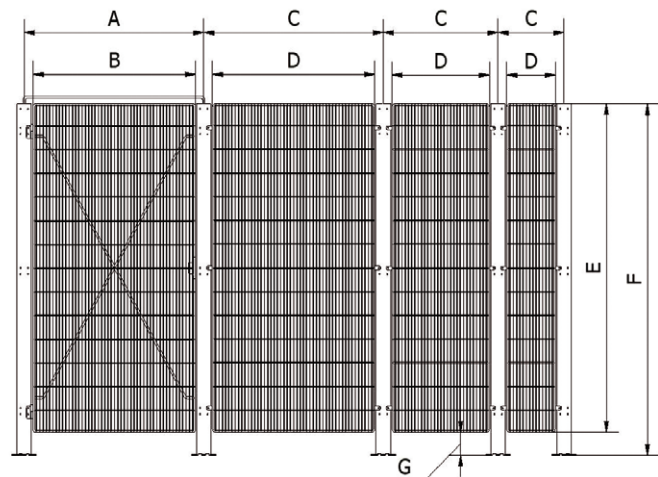


## Standard module dimensions

### 2,000 mm standard module

Letter	Description	Dimensions in mm
A	Door module, c-c post	1106
B	Door width	1000
C	Module, c-c post	1106/706/406
D	Mesh width	1000/600/300
E	Mesh height	1870
F	Post height	2000
G	Clearance	130

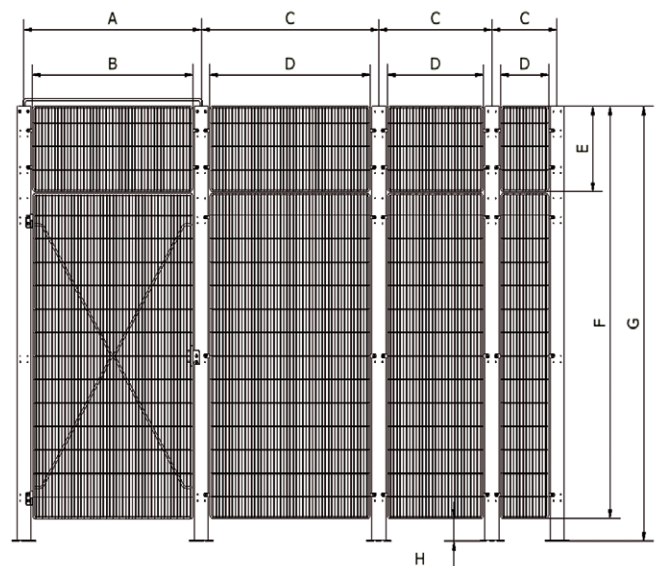
Mesh type	
Mesh, c-c	135-20
Wire	Ø3 mm & Ø4 mm



### 2,500 mm standard module

Letter	Description	Dimensions in mm
A	Door module, c-c post	1106
B	Door width	1000
C	Module, c-c post	1106/706/406
D	Mesh width	1000/600/300
E	Top mesh height	490
F	Mesh height	2370
G	Post height	2500
H	Clearance	130

Mesh type	
Mesh, c-c	135-20
Wire	Ø3 mm & Ø4 mm



NTF-Aalborg A/S is a dynamic and innovative niche company with over 25 skilled employees, a modern fleet of machinery and approx. 2,800 m2 of office and production space at its disposal

### Process equipment

An extensive programme of wire rack, wire baskets and other customer-tailored solutions in stainless wire and rod steel, with focus on handling and refinement primarily in the food industry

### Inventory and hygiene

The NTF Hygiene programme encompasses a broad range of products, in particular, hygiene stations and stainless products for staff facilities

### www.ntf.dk

Our website gives you access to up-to-date information and a complete overview of our product programme, with photographs and drawings

Version 2010-01 GB

NTF Aalborg  
Stainless steel designed for your benefit!

NTF Aalborg  
Stainless steel designed for your benefit!

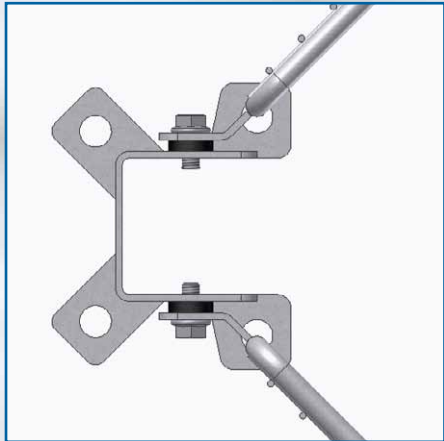
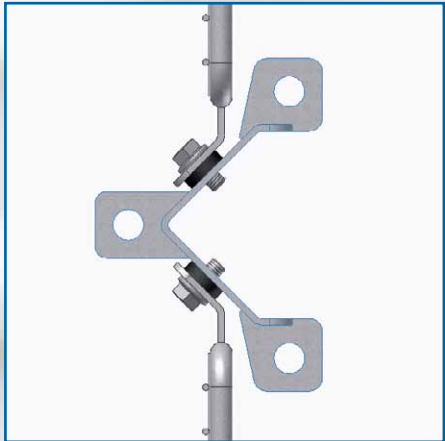
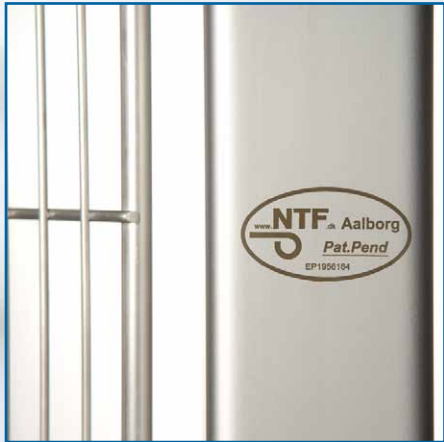




### No closed profiles



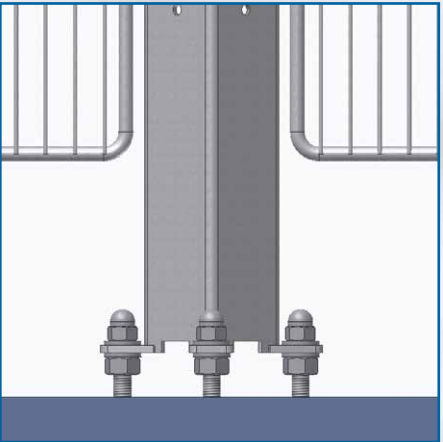
- Easy assembly
- No horizontal surfaces
- Complies with EN ISO 13857:2008
- Standard heights of 2,000mm and 2,500mm
- Modular structure
- Easy setup and assembly
- Completely constructed in AISI 304, 1st cl. pickled
- Can be supplied in AISI 316 on request



### Easy assembly



- All joints are made with flange bolts and spacers.
- Can be supplied with special thread rods to raise from the floor
- Even for installations not raised from the floor, it is possible to clean effectively and hygienically due to our patented design
- Spacers are provided in order to achieve optimal hygienic conditions in “High Risk Zones”



- Easy one man assembly due to the newly designed joining method
- Meet the requirements of section 1.4.2.1. of annex 1 of the Machinery Directive.
- The fixing system must remain attached to either the fencing or the post
  - Tools must be used on disassembly
  - Fixed fencing must be incapable of remaining in place without its fixings

### Sliding door system



- A cleaning-friendly sliding door system
- The large roller surface allows for optimal life-time and increased stability
- The solid and simple locking mechanism ensures effective closure of the sliding door

